

Scalin' The Blues

By JAMES P. JOHNSON

PIANO

ff
Pesante

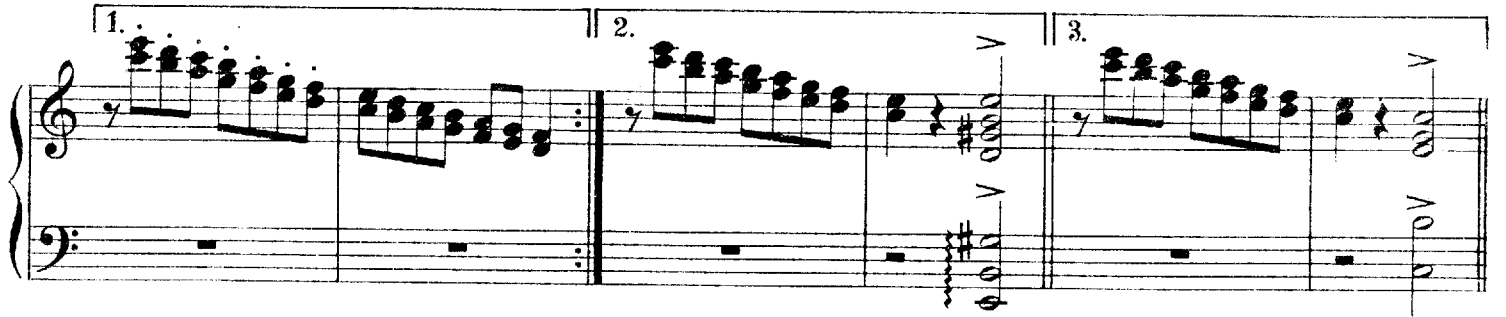
L. H.
mf

L. H.

tr

R.H.
L.H.

R.H.
R.H.



D. S.

A musical score for the song "The Rose Tree". The score is written for piano and voice. The piano part is in the left hand, and the voice part is in the right hand. The key signature is one flat (B-flat), and the time signature is 4/4. The piano part consists of a series of chords and single notes, while the voice part consists of a melody. The score is divided into four measures. The first measure contains the piano introduction and the first line of the melody. The second measure contains the second line of the melody. The third measure contains the third line of the melody. The fourth measure contains the fourth line of the melody and the piano accompaniment.

TRIO

A musical score for the song 'The Rose Tree'. It features a treble and bass staff. The treble staff has a key signature of one flat (B-flat) and a common time signature (C). The bass staff has a key signature of one flat (B-flat) and a common time signature (C). The melody is in the treble staff, and the bass line is in the bass staff. The score consists of six measures. The first four measures have a treble staff with a key signature change to two sharps (F# and C#) and a common time signature (C). The fifth and sixth measures have a treble staff with a key signature change to one flat (B-flat) and a common time signature (C). The bass staff has a key signature change to one flat (B-flat) and a common time signature (C) in the first four measures, and a key signature change to one flat (B-flat) and a common time signature (C) in the fifth and sixth measures.

A musical score for the song 'The Rose Tree'. It features a treble and bass staff. The treble staff has a key signature of one flat (B-flat) and a common time signature. The bass staff has a key signature of one flat (B-flat) and a common time signature. The melody is written in the treble staff, and the bass line is written in the bass staff. The score consists of five measures. The first measure has a treble staff with a B-flat and a common time signature, and a bass staff with a B-flat and a common time signature. The second measure has a treble staff with a B-flat and a common time signature, and a bass staff with a B-flat and a common time signature. The third measure has a treble staff with a B-flat and a common time signature, and a bass staff with a B-flat and a common time signature. The fourth measure has a treble staff with a B-flat and a common time signature, and a bass staff with a B-flat and a common time signature. The fifth measure has a treble staff with a B-flat and a common time signature, and a bass staff with a B-flat and a common time signature.

A musical score for the song 'The Rose Tree'. It is written for voice and piano. The key signature is one sharp (F#), and the time signature is 2/4. The score consists of five measures. The first measure shows the vocal melody starting with a quarter note G4, followed by a quarter rest, and then a half note A4. The piano accompaniment starts with a quarter note G3, followed by a quarter note A3, and then a half note B3. The second measure shows the vocal melody with a quarter note B4, followed by a quarter note C5, and then a half note D5. The piano accompaniment has a quarter note B3, followed by a quarter note C4, and then a half note D4. The third measure shows the vocal melody with a quarter note E5, followed by a quarter note F#5, and then a half note G5. The piano accompaniment has a quarter note E4, followed by a quarter note F#4, and then a half note G4. The fourth measure shows the vocal melody with a quarter note A5, followed by a quarter note B5, and then a half note C6. The piano accompaniment has a quarter note A4, followed by a quarter note B4, and then a half note C5. The fifth measure shows the vocal melody with a quarter note D6, followed by a quarter note E6, and then a half note F#6. The piano accompaniment has a quarter note D5, followed by a quarter note E5, and then a half note F#5.

A musical score for the song 'The Rose Tree'. It features a treble and bass staff. The treble staff has a key signature of one sharp (F#) and a common time signature (C). The bass staff has a key signature of one flat (Bb) and a common time signature (C). The melody is in the treble staff, and the accompaniment is in the bass staff. The score consists of six measures. The first four measures show the melody and accompaniment. The fifth measure shows the melody and accompaniment. The sixth measure shows the melody and accompaniment.

A musical score for the song 'The Rose Tree'. It features a treble and bass staff. The treble staff contains a melody with eighth and sixteenth notes, and the bass staff contains a bass line with eighth and sixteenth notes. The key signature is one flat (B-flat), and the time signature is 4/4. The score is divided into two systems, each with four measures. The first system ends with a double bar line, and the second system begins with a repeat sign. The melody is in the treble staff, and the bass line is in the bass staff. The key signature is one flat (B-flat), and the time signature is 4/4. The score is divided into two systems, each with four measures. The first system ends with a double bar line, and the second system begins with a repeat sign. The melody is in the treble staff, and the bass line is in the bass staff.

Interlude

Interlude

R.H.

L.H.

L.H.

R.H.

L.H.

D.S. Trio to Coda

CODA

CODA

Pesante

L.H.

mf

Pesante

L.H.

R.H.